



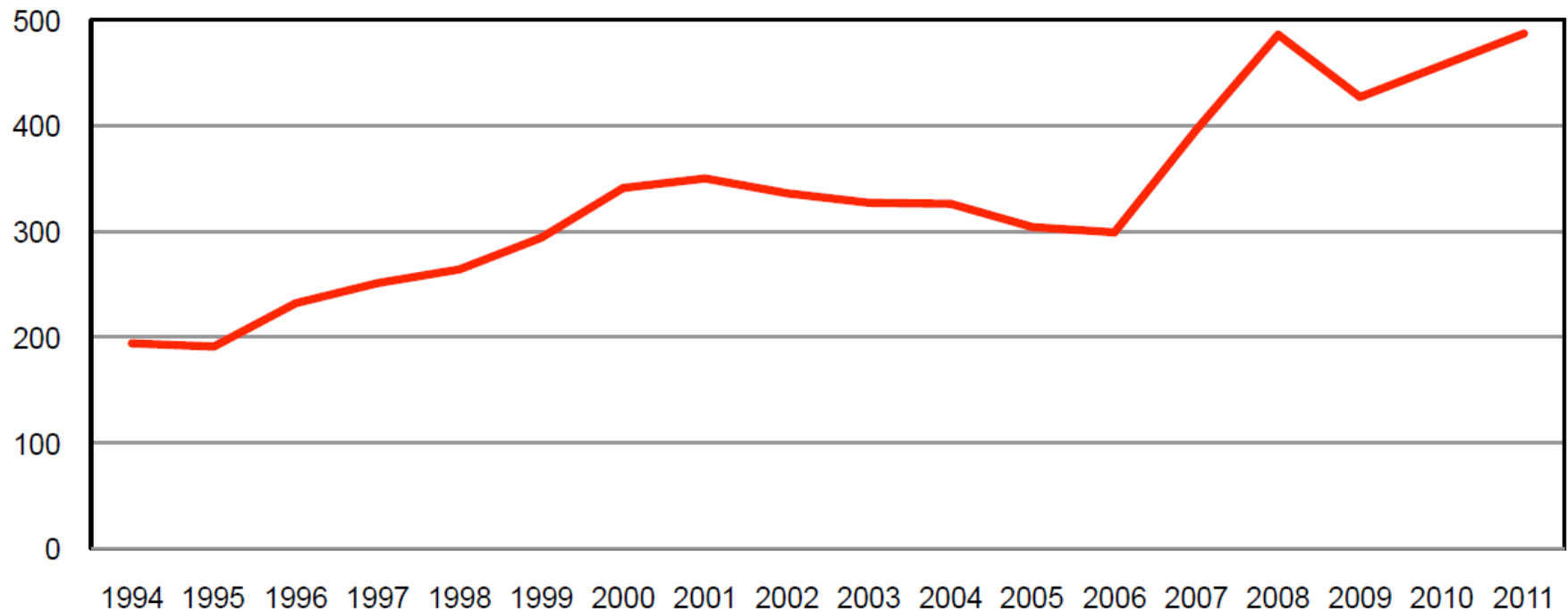
Swedish National Institute
of **Public Health**

Recent trends in deaths related to OST

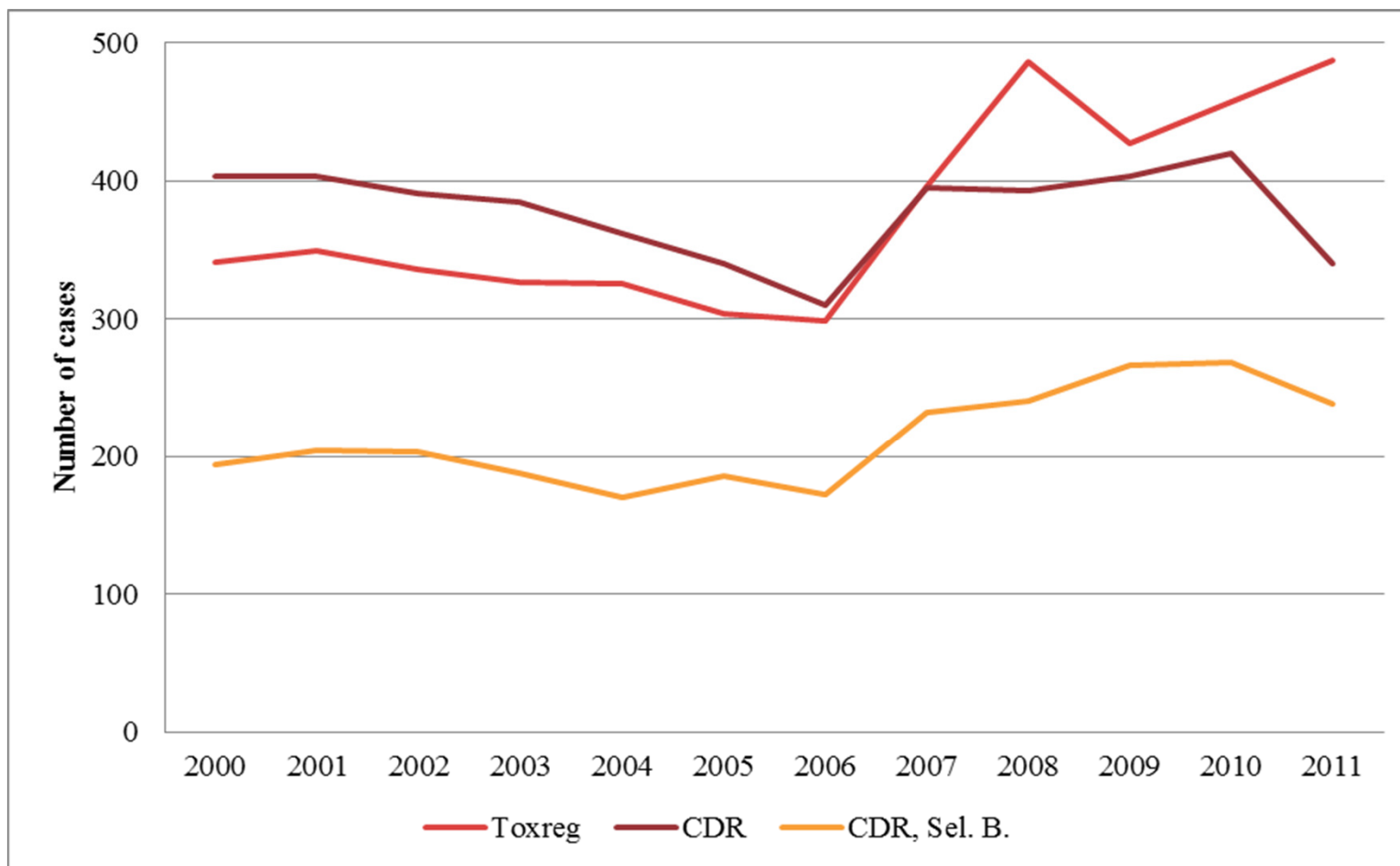
Data from the special mortality register, Toxreg,
administered by the Karolinska Institute.

Presented by Joakim Strandberg, Swedish Head of
Focal Point to the EMCDDA

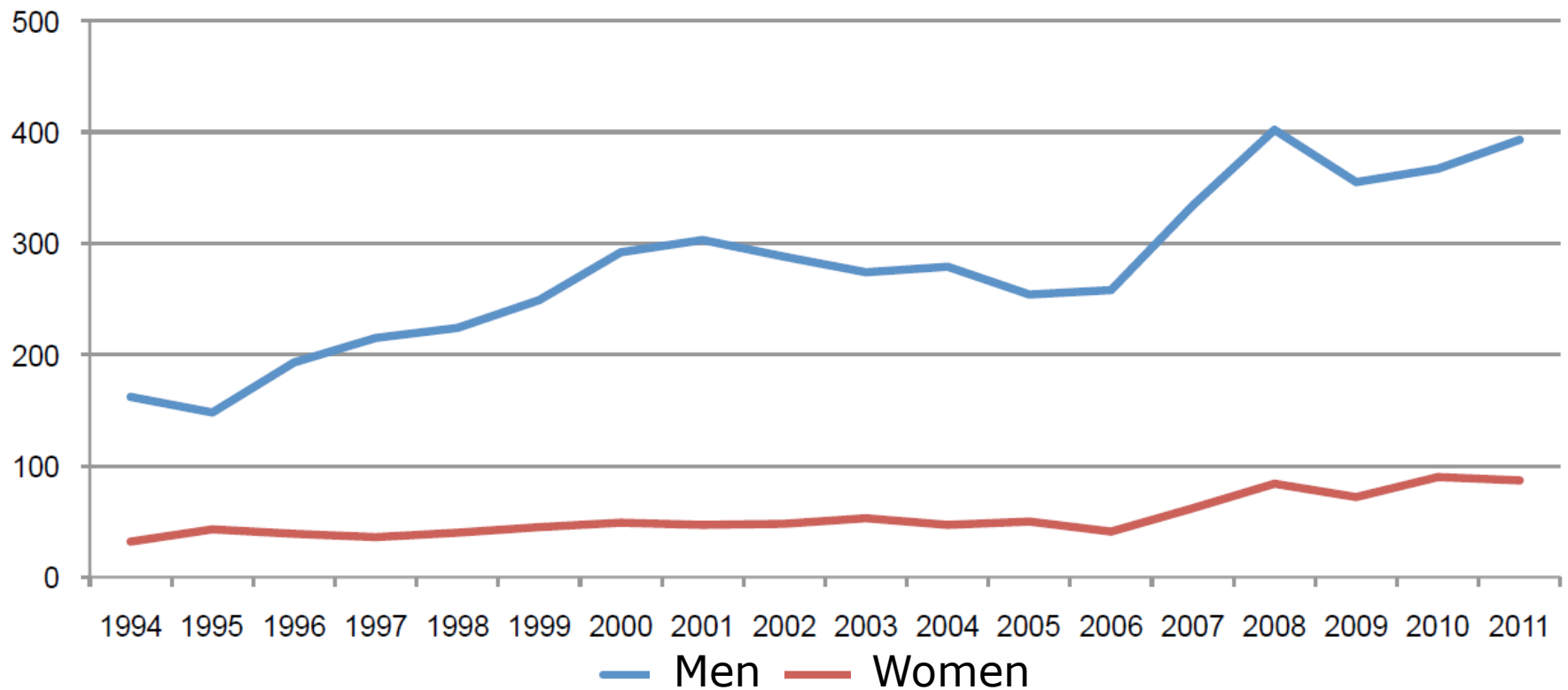
Annual number of forensically examined deaths with presence of illicit drugs and methadone or buprenorphine.



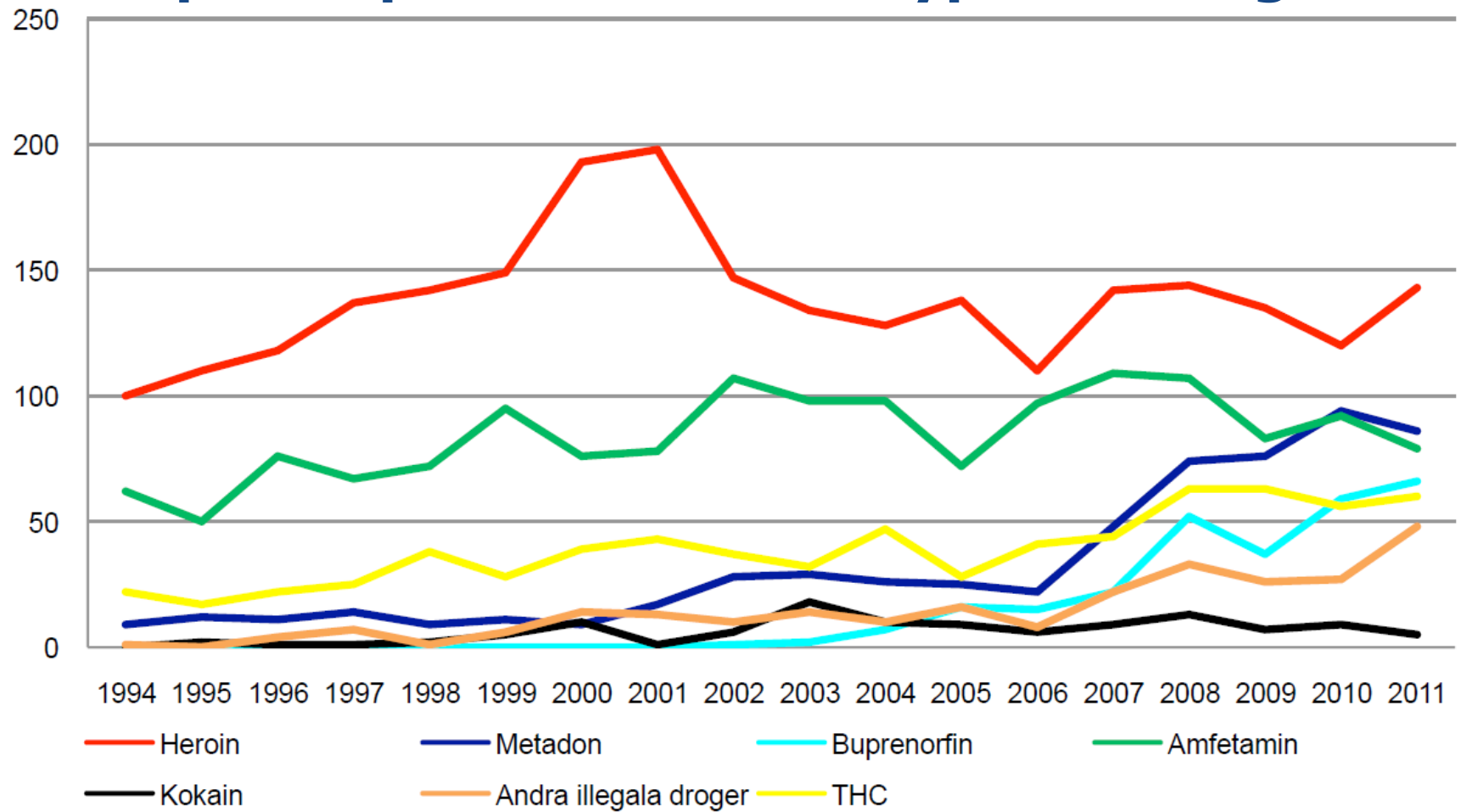
Number of deaths according to national registers and case selection procedures.

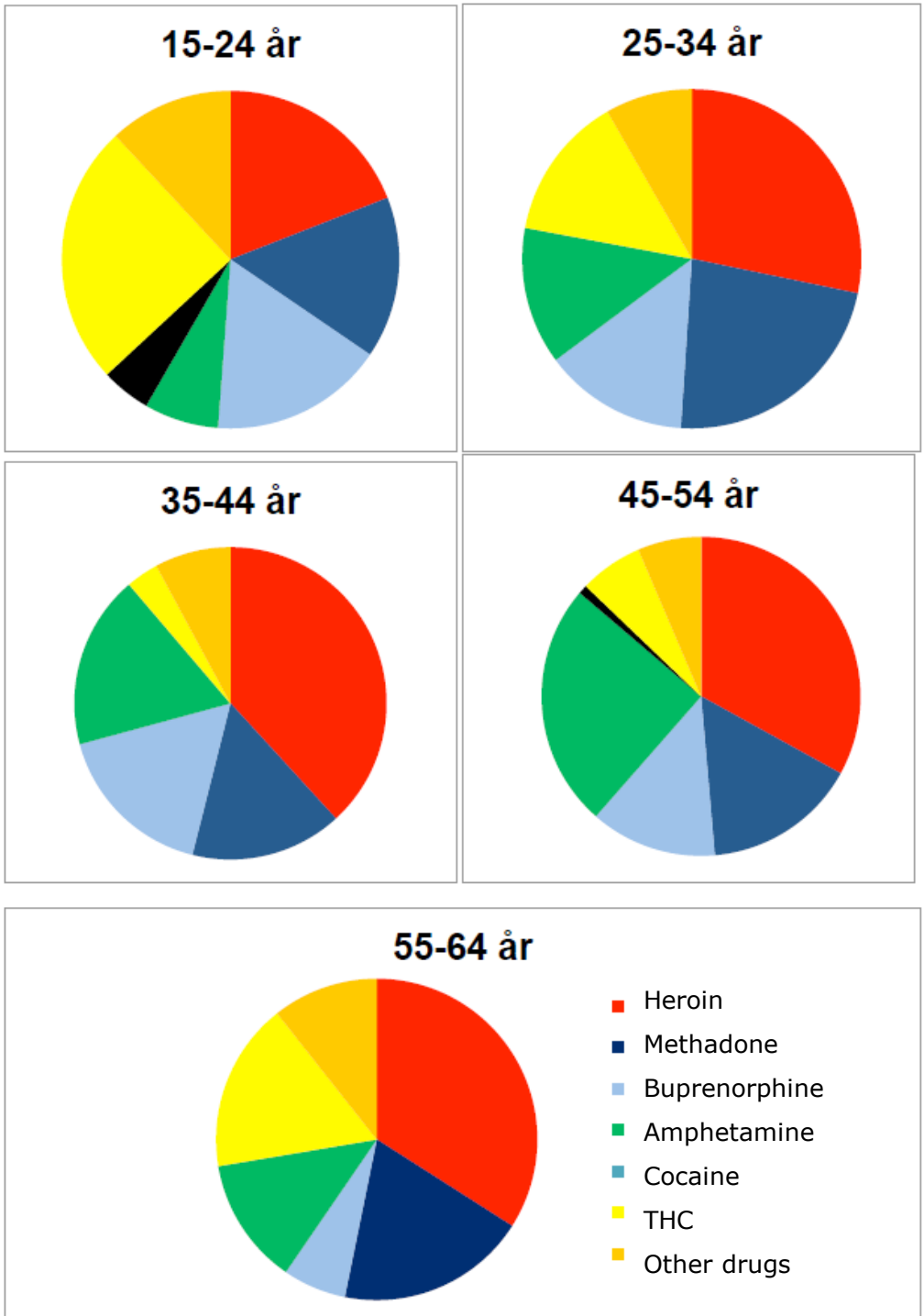


Annual number of forensically examined deaths with presence of illicit drugs and methadone or buprenorphine by gender



Annual number of deaths with presence of illicit drugs and methadone or buprenorphine divided in types of drugs.





Annual number of forensically examined deaths with presence of methadone and cases where methadone is considered to be of significance for the fatal outcome

