

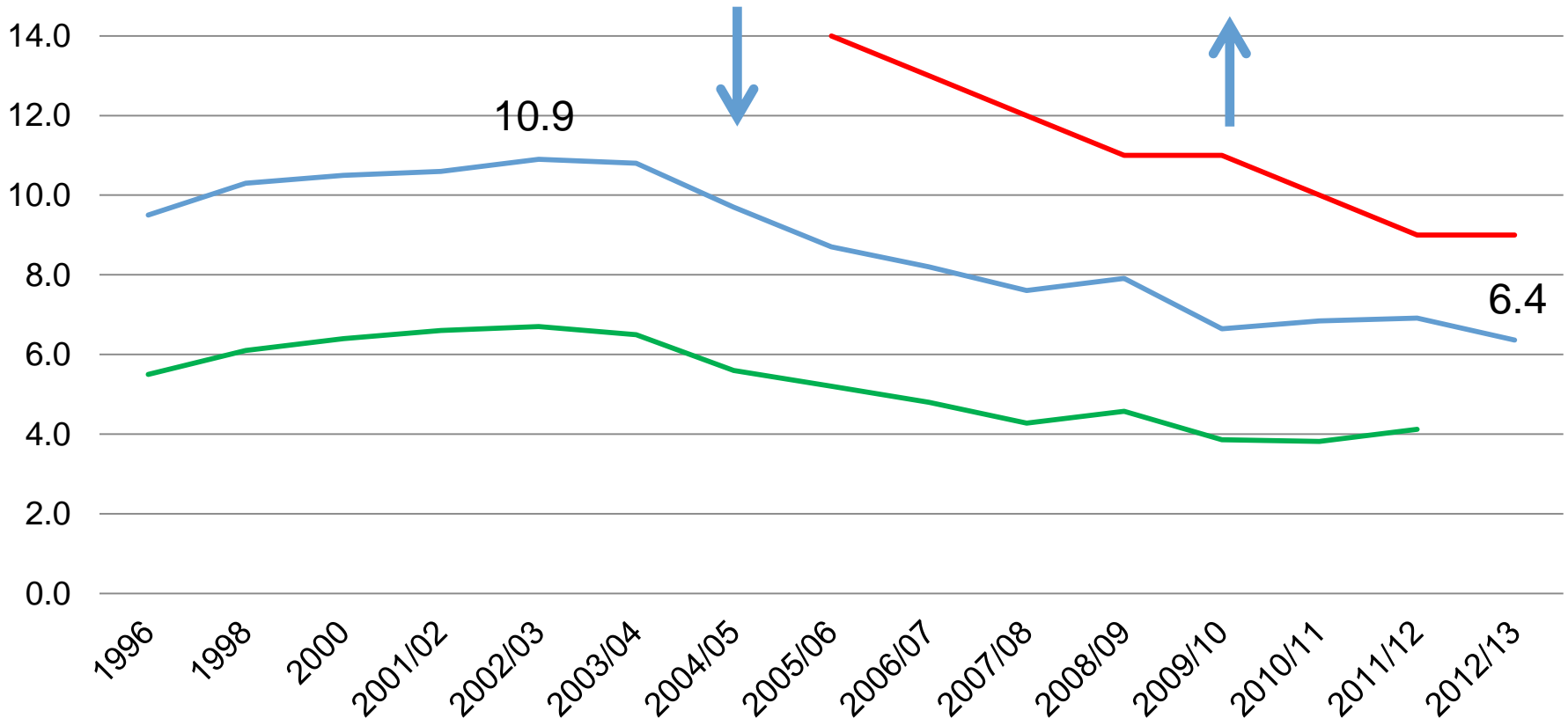
Cannabis trends in the UK

Nicola Singleton

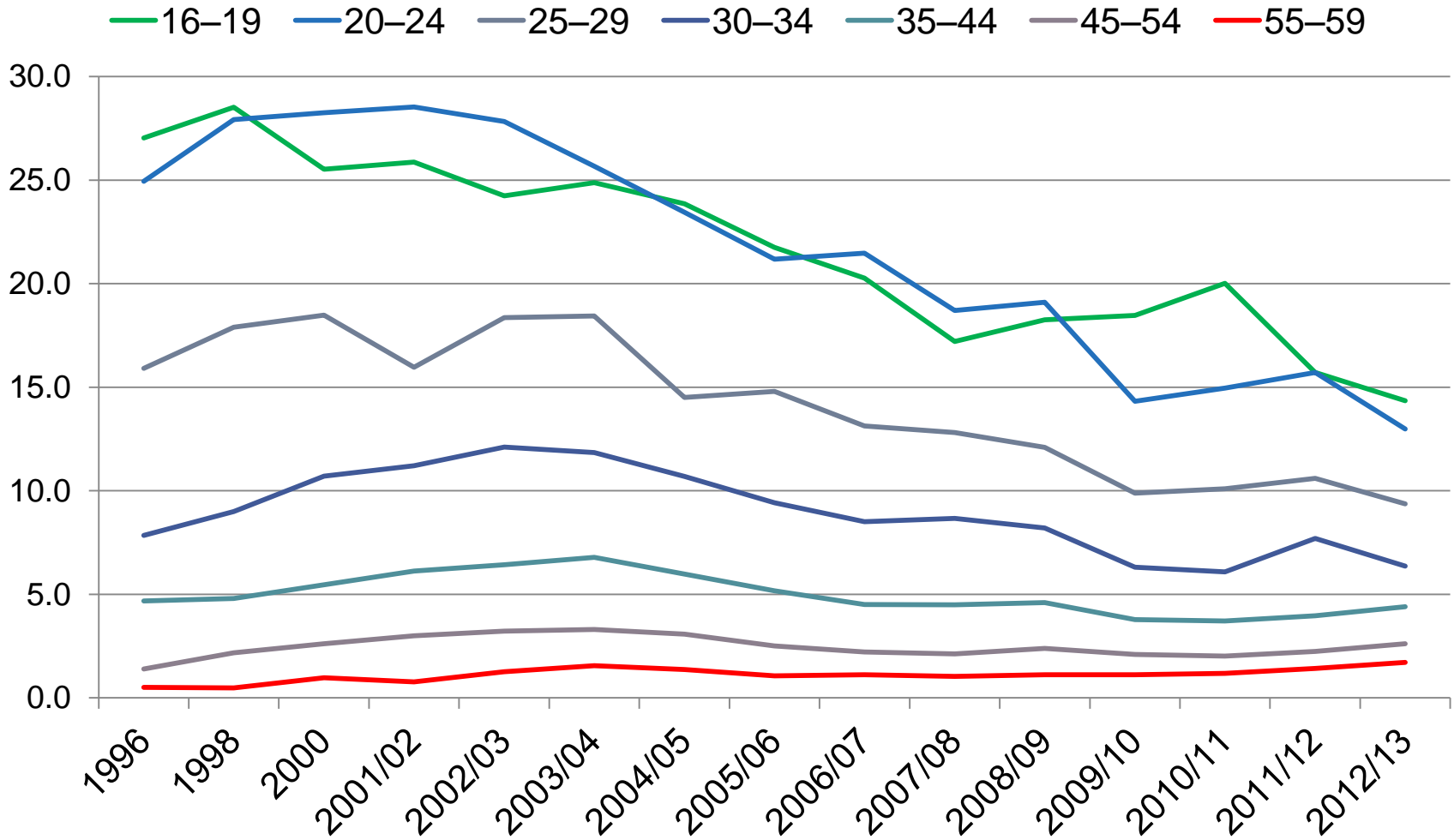
Population Prevalence Expert, UK Focal
Point

Trends in prevalence of cannabis use

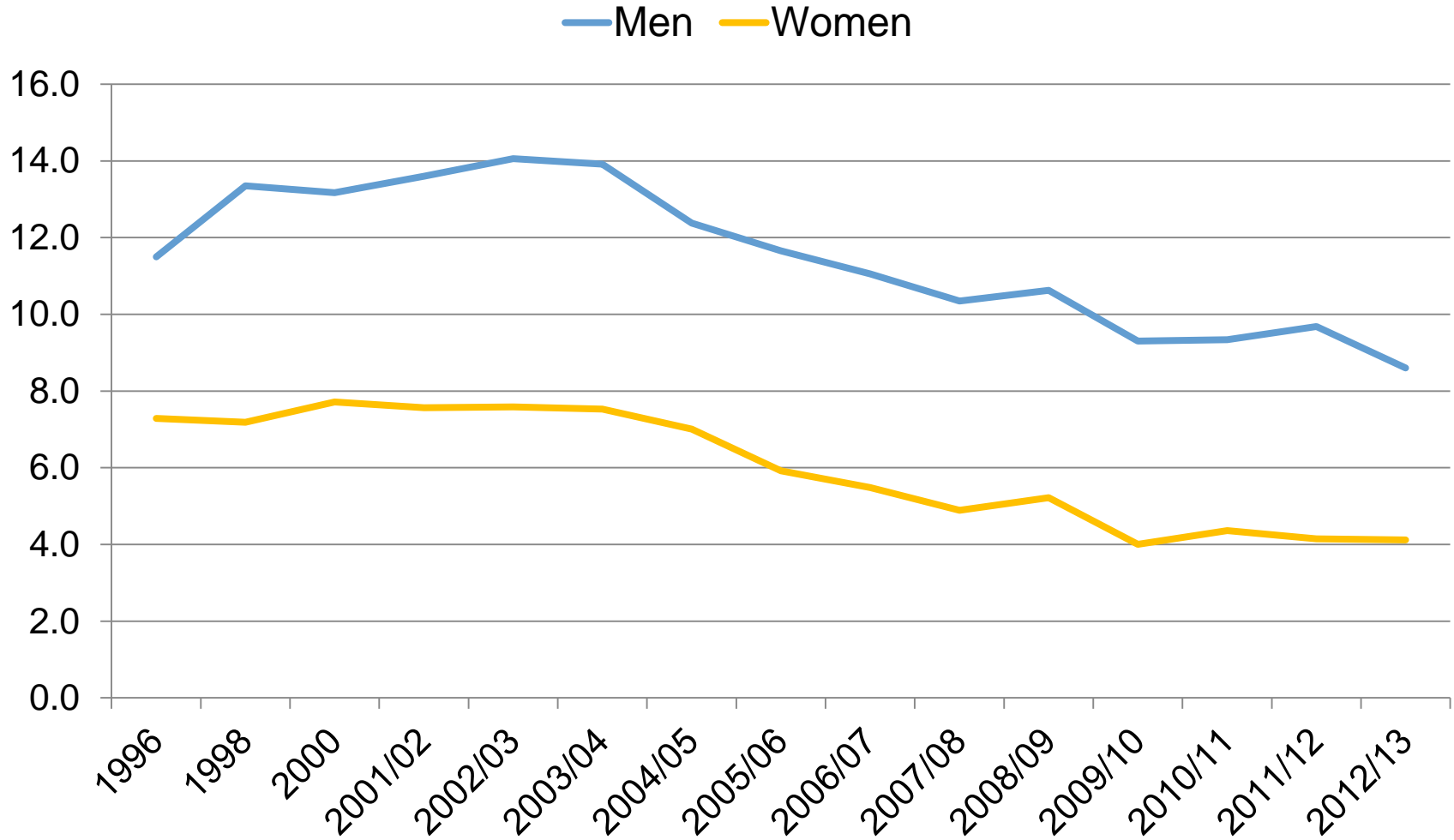
— CSEW (16-59 yrs, LYP, E&W) — CSEW (16-59 yrs, LMP, E&W)
— SD&D (11-15 yrs, LTP, Eng)



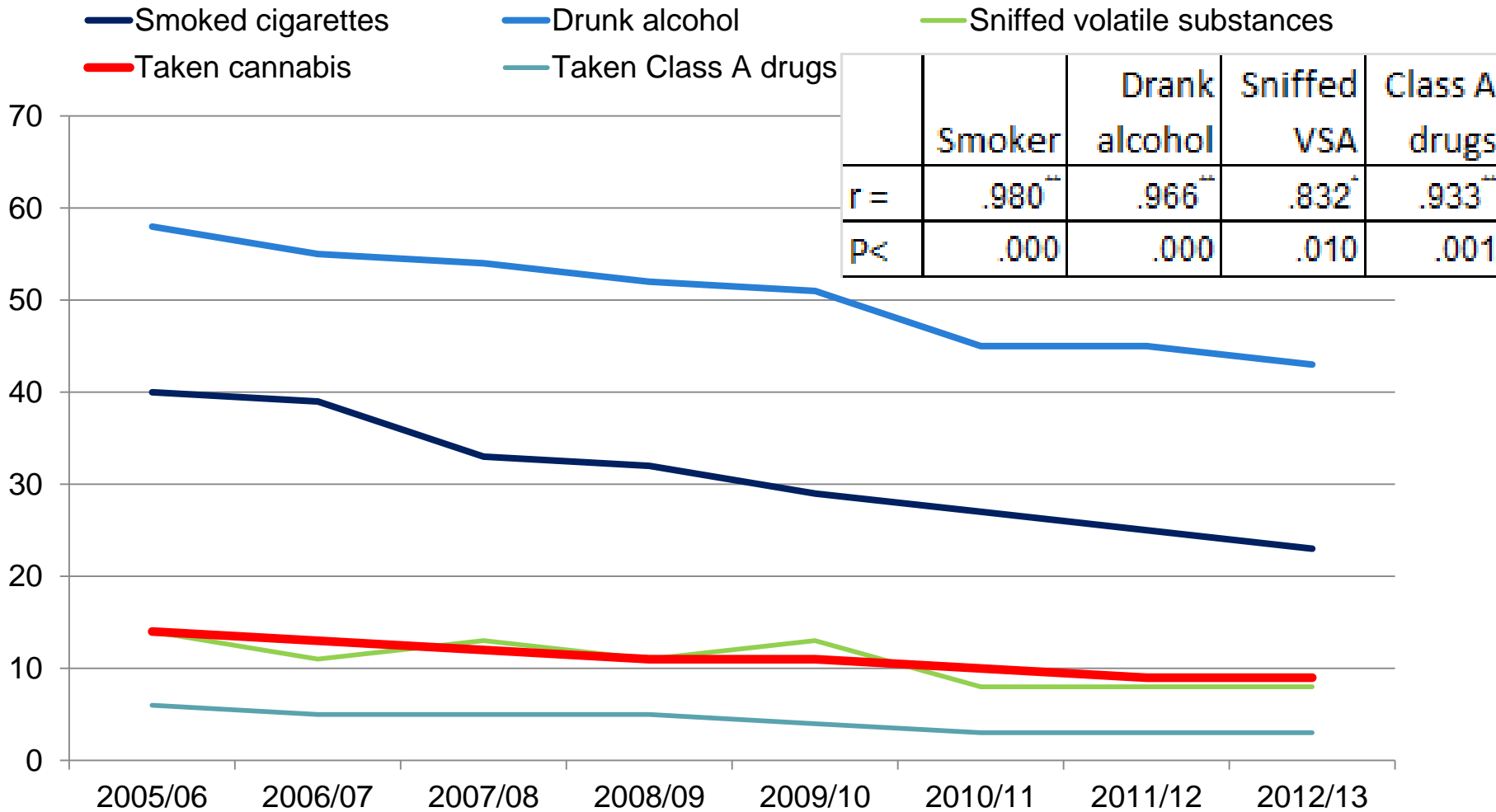
Trends in LYP of cannabis use by age, CSEW



Trends in LYP of cannabis use by sex, CSEW

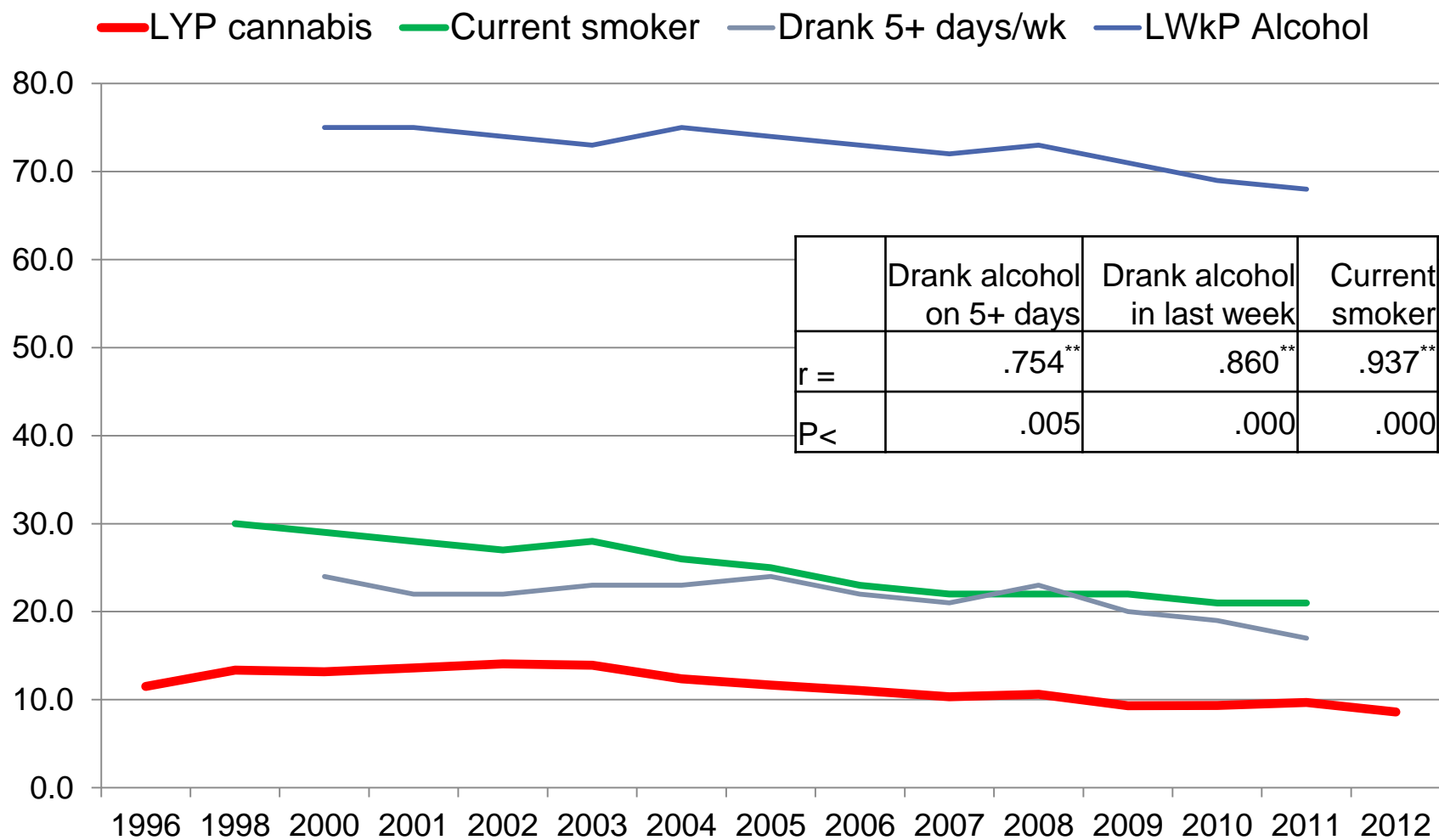


Trends in use of substances, SD&D survey, England



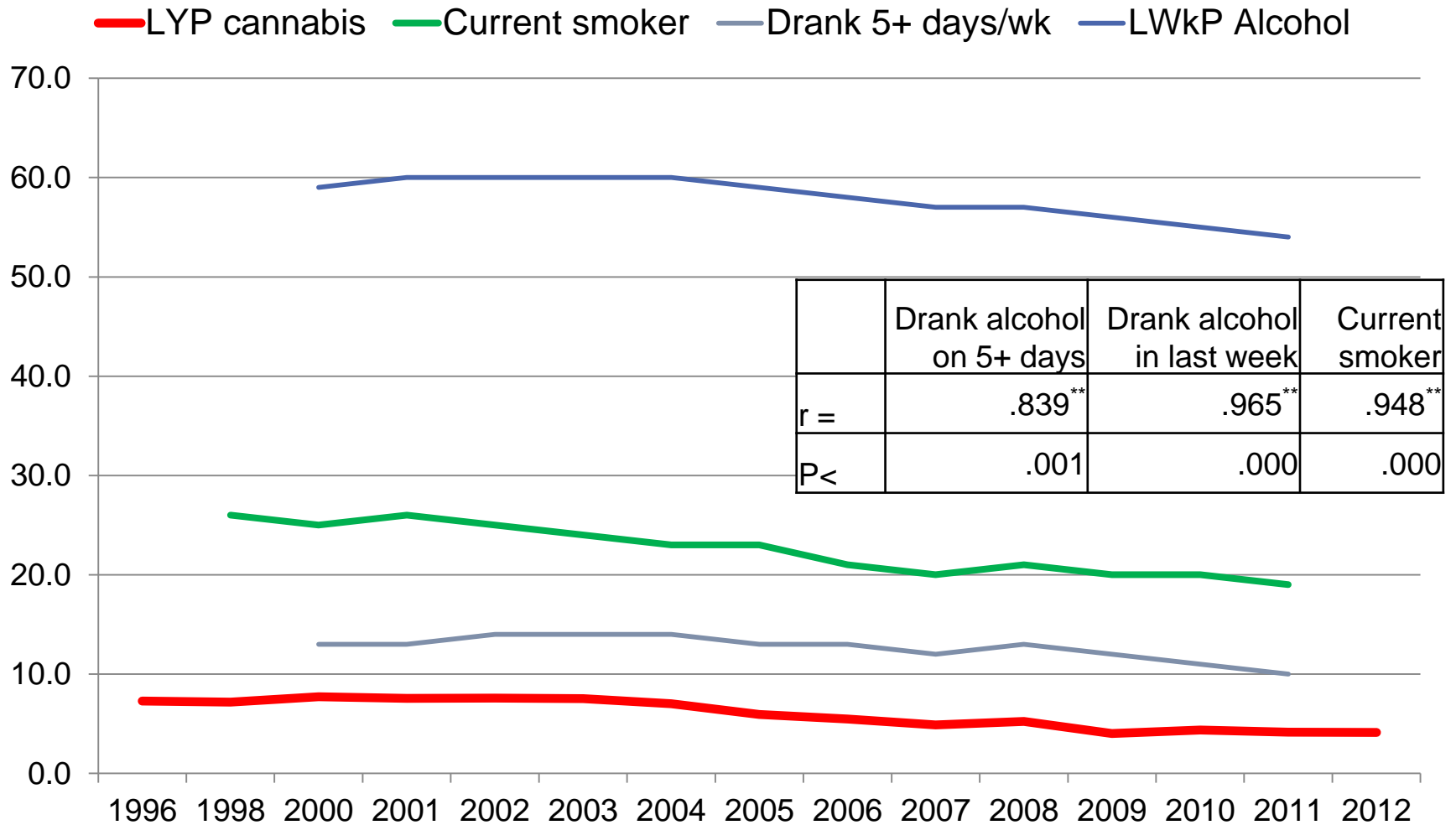
Substance use prevalence trends, Men

(Cannabis, CSEW, 16-59 yrs; Drinking and Smoking, GLF, England, 16+)



Substance use prevalence trends, Women

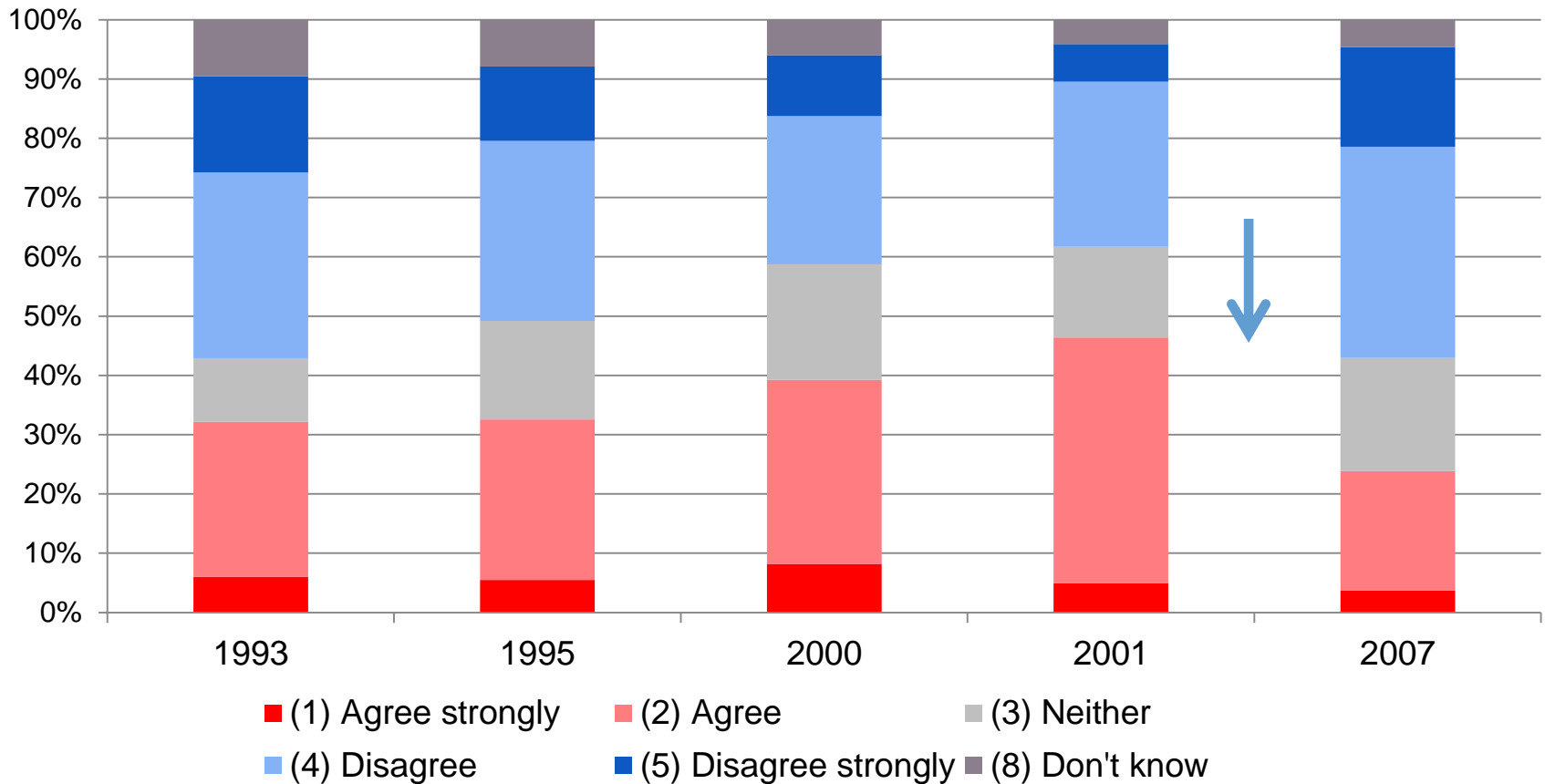
(Cannabis, CSEW, 16-59 yrs; Drinking and Smoking, GLF, England, 16+)



Changing attitudes towards cannabis

Source: British Social Attitudes Survey

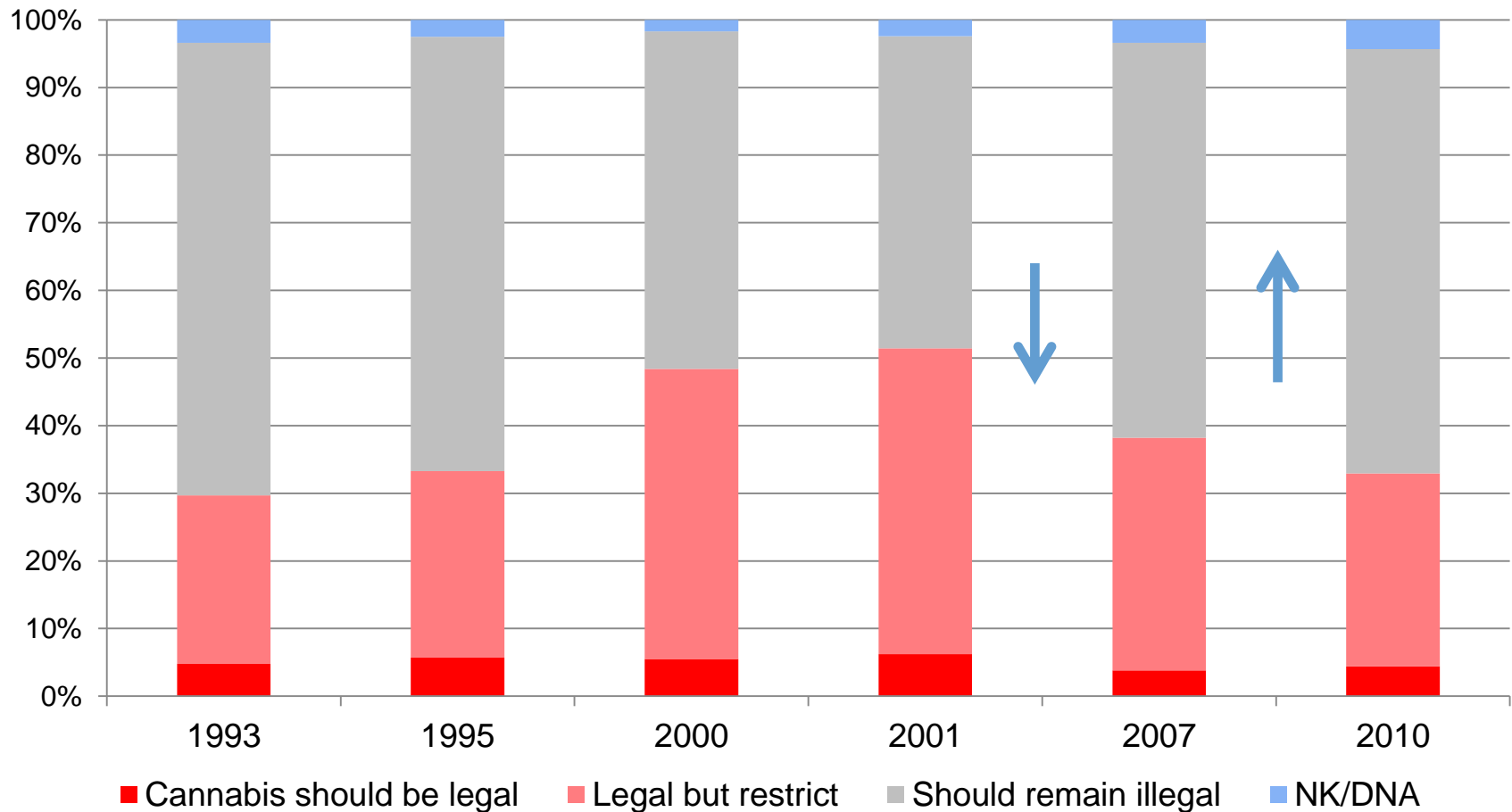
Question: How much do you agree or disagree that ...
cannabis isn't nearly as damaging as some people think?



Changing attitudes towards cannabis

Source: British Social Attitudes Survey

Question: Which of these statements comes closest to your own view? Taking cannabis should be legal, without restrictions OR taking cannabis should be legal, but it should only be available from licensed shops OR taking cannabis should remain illegal.



Relationship between attitudes and use

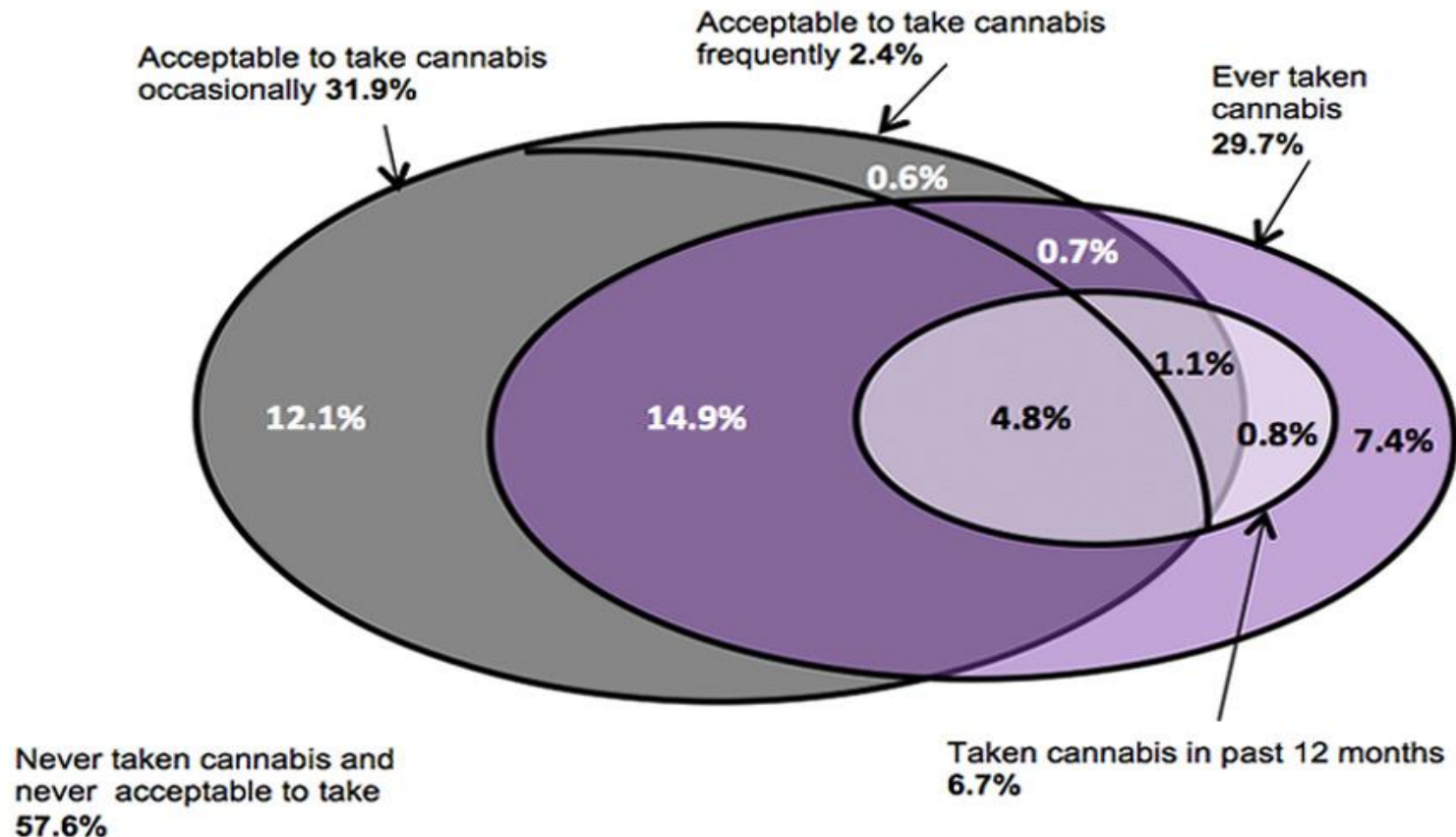
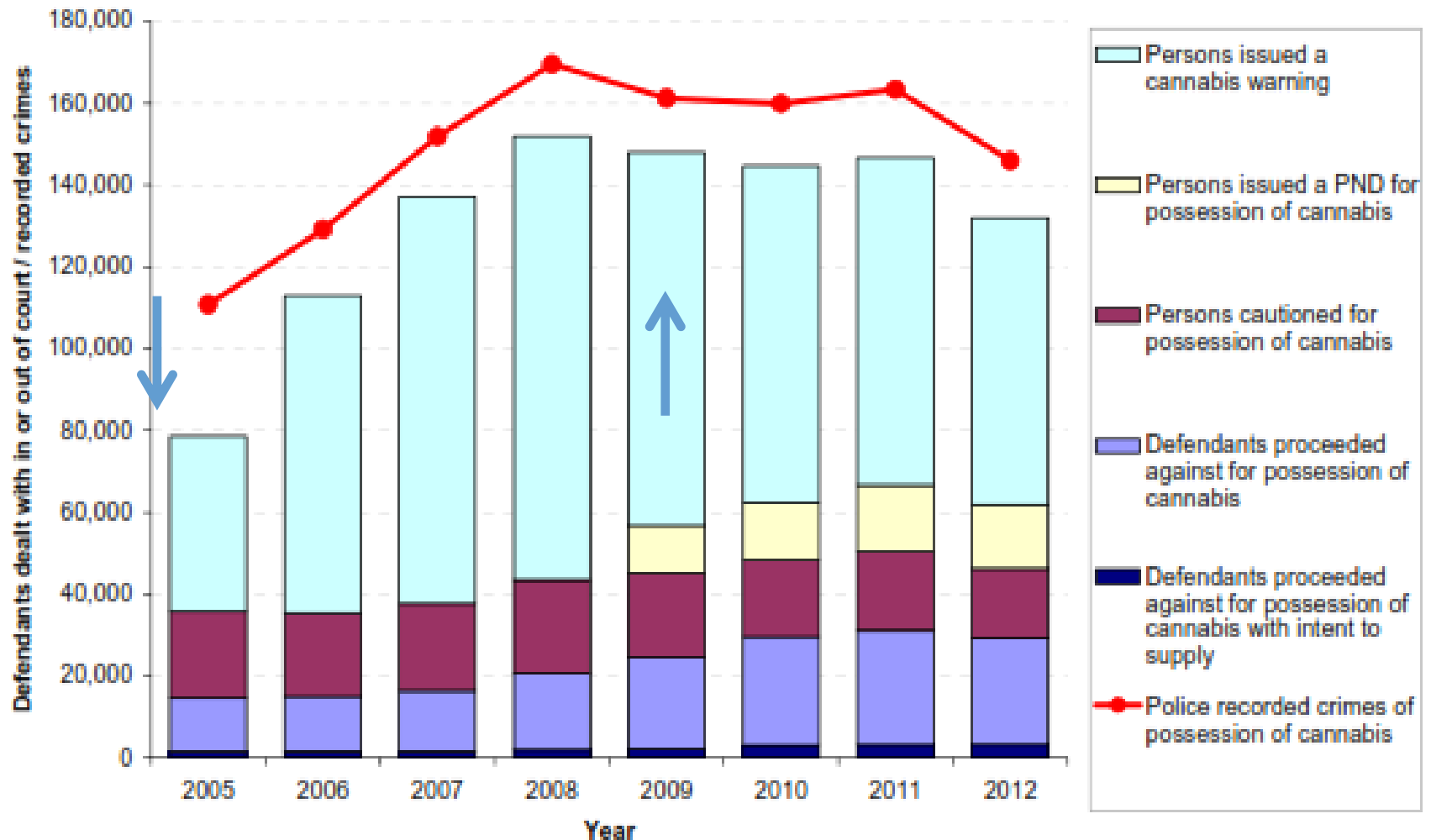


Figure 5.4 Acceptability of people of own age taking any cannabis by whether taken cannabis, adults aged 16 to 59, 2012 to 2013 CSEW

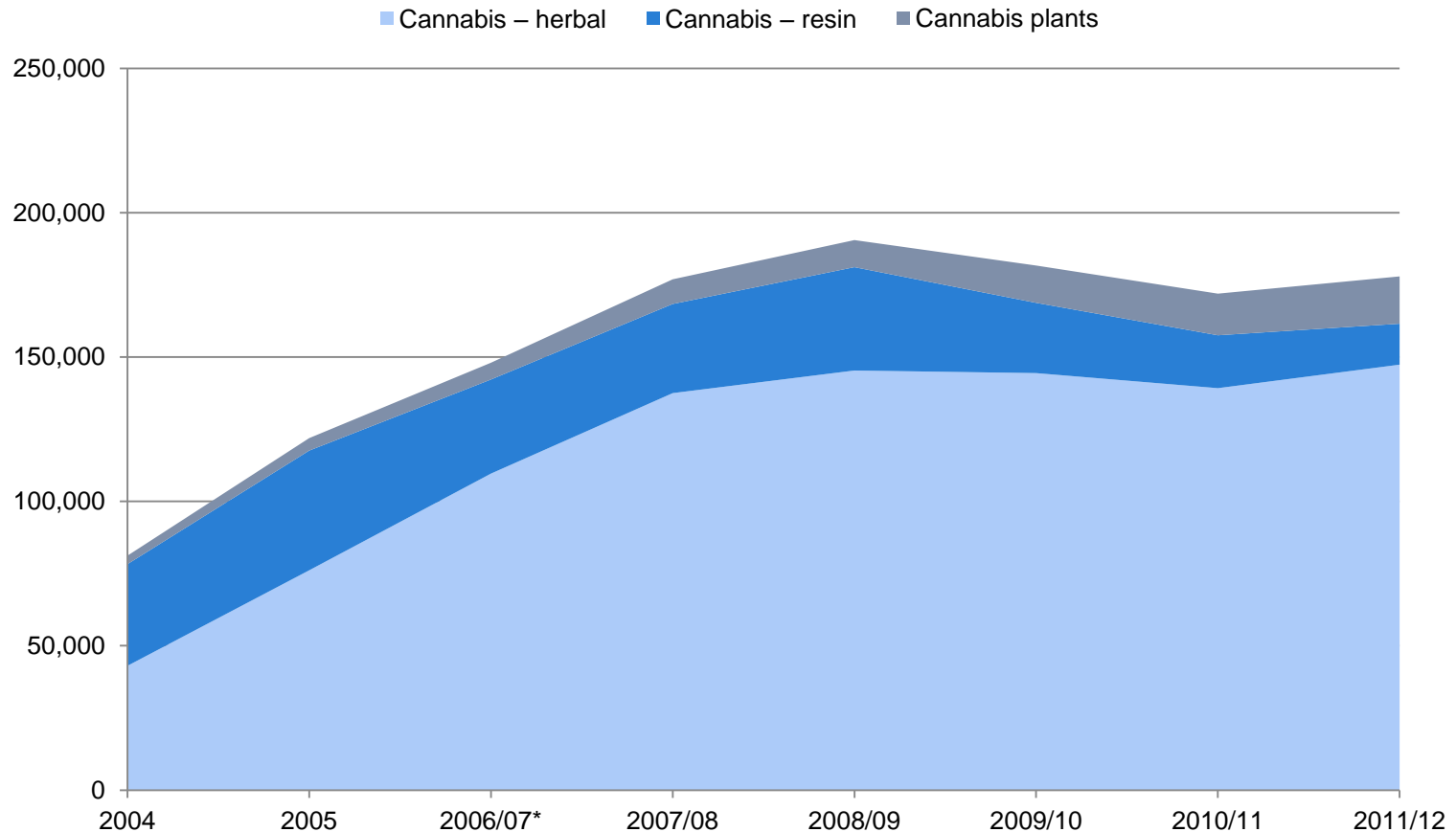
Chart notes: Base: All adults aged 16 to 59 Due to rounding, individual figures may not sum to totals. Not to scale

Figure 2.5 Police recorded crime and justice outcomes for possession of cannabis offences, 2005 to 2012



Changing type of cannabis used

Number of seizures by police & border force, England & Wales



Increase in numbers seeking treatment for cannabis

